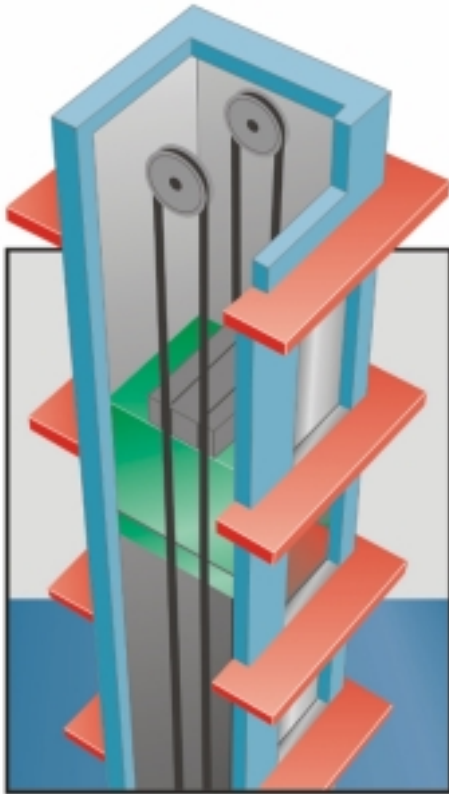


VAREOSOFT SAG M 300



- Symmetrical current demand in all three phases during motor run-up
- Current limiting during motor run-up, adjustable 0 - 4 x I_{rated}
- Suitable for 3 line or 6 line (open delta) connection to the motor
- Key-pad and LED display for parameter set-up
- 24 VDC enable or contacts
- Soft-start and soft-stop functions
- Programmable time-elapse restart inhibit (e.g. for air-conditioning equipment)
- Status relay for top-of-ramp and fault indication
- Optional ASI Bus interface

Soft-start units

VAREOSOFT SAG M 300

Electronic soft-starts for motors offer a number of advantages over direct-on-line starting:-

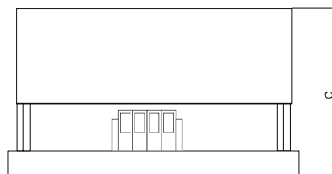
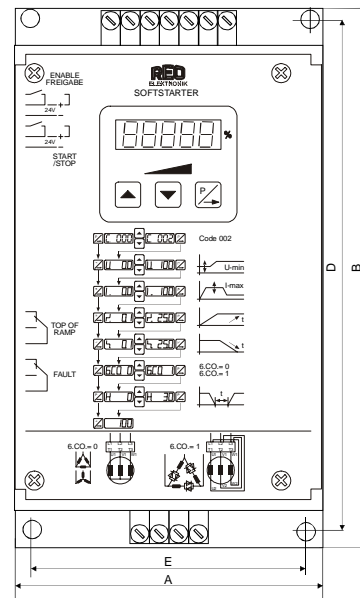
They protect the mains supply from sags and damaging surges (transients), whilst reducing the current demand during start-up.

Furthermore, the motor run-down can be controlled by the electronic unit thereby reducing abrupt stopping.

The VAREOSOFT SAG M 300 series of soft-starters have an internal current regulator which can be set to limit the current, on each of the three phases, during the run-up period. The start-up current can be limited from 0.5 to 4 times the rated current of the motor. To ensure a smooth start-up the initial voltage can be set between 0 and 50% of rated voltage which in turn determines the starting torque. Likewise the run down ramp time for stopping can be adjusted.

The semiconductors are by-passed at the top of the start-up ramp. Status relay contacts are provided for indicating completion of the run-up sequence and also for fault warning. The motor can be connected in a star or open-delta configuration.

Type SAG M 300/	11	23	32	45	63	75
Supply voltage:	3 x 380...415 V $\pm 10\%$ 50 / 60 Hz					
Motor power 3 Line connection [kW]:	7,5	11	18,5	22	30	37
Motor power 6 Line connection (open delta) [kW]:	11	18,5	30	37	45	55
Calculated current [A]:	15,2	21,7	36	41	55	68
Maximum start-up current	0...4 x I _{rated} (adjustable)					
Starts/hour:	60, duty cycle 20 secs. (30 %)					
Ramp up/down time	0...25 secs. (adjustable)					
Starting torque:	0...50 % (adjustable)					
Restart inhibit time delay:	0...30 secs.					
Relay: Fault	Changeover contacts 250 V, 1 A (AC)					
By-pass:	Changeover contacts 250 V, 1 A (AC)					
Running temperature:	0...45 °C					
Installation orientation:	Vertical					
Construction:	IP 00					



Dimensions	A [mm]	B [mm]	C [mm]	D [mm]	E [mm]
SAG M300 11	150	300	150	280	130
SAG M300 23	200	300	165	280	180
SAG M300 32	200	300	165	280	180
SAG M300 45	216	300	220	280	195
SAG M300 63	216	300	220	280	195
SAG M300 75	216	400	220	380	195

REO UK LTD

Units 8 – 10 Long Lane Industrial Estate
 Craven Arms, Shropshire SY7 8DU
 Tel.: 01588 673411
 Fax 01588 672718
 www.reo.co.uk
 email: main@reo.co.uk

Subject to technical modifications without prior notice